


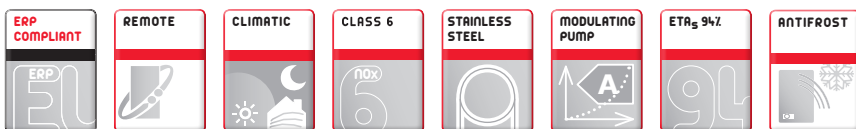
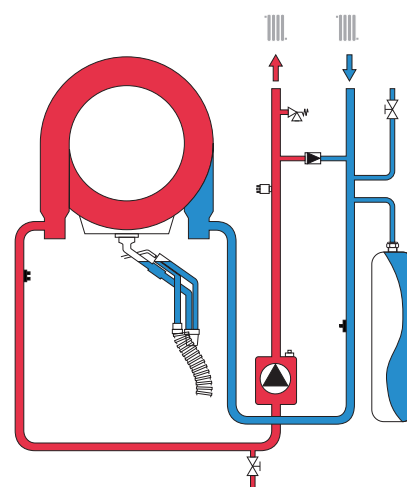
# IXINOX B

## FLOOR STANDING GAS CONDENSING BOILER, HEATING ONLY



- Heating only generator, with possibility to pilot a free-standing DHW storage tank
- **Heating exchanger in stainless steel**, boasting considerable thickness
- Exchanger consisting in a unique large section coil, with no welding, nor joint
- Integrated combustion unit featuring premix assembly with silencer, fan, stainless steel burner
- **Modulating pump** with  $\Delta T$  control, timed anti-seize system, electronic control of starting and pull-up torque
- Complete thermoacoustic insulation
- Can be combined to the **modulating remote control** and **outdoor probe**
- Concentric or twin pipe flues system, with possible right, left or back outlet
- Easily accessible water and gas connections: this **facilitates replacement of old generators**
-  : in combination with CRM remote control and the outdoor probe (range from G to A++)

### WATER SCHEME



MODEL				B 35
Classe ERP		(G - A+ Class)		
Seasonal efficiency				94
Heat input		Min	kW	6,7
		Max Heating	kW	32,0
Heat output	80°C - 60°C	Min	kW	6,6
		Max Heating	kW	31,4
	50°C - 30°C	Min	kW	7,2
		Max Heating	kW	34,0
Efficiency	80°C - 60°C		Pmax %	98,0
			Pmin %	97,8
	50°C - 30°C		Pmax %	106,1
			Pmin %	107,5
		30% partial load	Pmax %	108,8
Heating operating pressure		Max	bar	3
Empty weight			kg	50
Dimensions		WxHxD	mm	400x850x595
<b>CODE</b> (see page 3)				<b>0TA03AWD</b>