

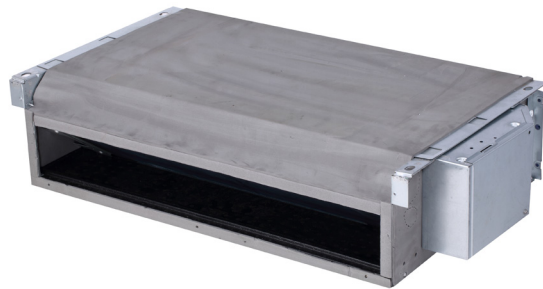


Ventilconvettore con motore inverter Fancoil with DC inverter motor

Cod. 3540002120 - Rev. 00 - 10/2024



I-VM / 3V-VM










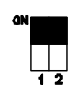
I-VN / 3V-VN

IT TOP fancoil Modbus map

EN TOP Ventilconvettore Modbus map



Descrizione della comunicazione	Description of communication
Le unità Ventilconvettore serie Top agiscono sempre da slave nella comunicazione Modbus, ricevendo le richieste da una unità master esterna (BMS). L'indirizzo della singola unità viene selezionato impostando i DIP ENC1 e S4 come mostrato in figura:	Top fan coil series units always act as slaves in Modbus communication, receiving requests from an external master unit (BMS). The address of the single unit is selected by setting the DIP switches ENC1 and S4 as shown in the figure:

ENC1	S4	Descrizione / description
		Address 0-15
		Address 16-31
		Address 32-47
		Address 48-63

<p>Con impostazione ENC1+S4 = 0, l'unità avrà indirizzo 1. Le unità supportano il comando broadcast (indirizzo 0) da parte del BMS. Tuttavia, a questo comando non seguirà una risposta dalle singole unità (eventuali errori non vengono riportati). L'impostazione degli indirizzi va eseguita prima di accendere le unità.</p>	<p>With ENC1+S4 = 0, the unit will have address 1. The units support the broadcast command (address 0) from the BMS. However, this command will not be followed by a response from the individual units (any errors are not reported). The address setting must be done before switching on the units.</p>
---	--

Parametri della comunicazione		Communication parameters	
▪ Interfaccia:	RS-485	▪ Interface:	RS-485
▪ Protocollo:	Modbus RTU	▪ Protocol:	Modbus RTU
▪ Baud rate:	9600	▪ Baud rate:	9600
▪ Lunghezza dato:	8bit	▪ Data length:	8bit
▪ Parità:	nessuna	▪ Parity:	nessuna
▪ Stop bit:	1	▪ Stop bit:	1
▪ Comandi supportati:	0x03 0x06 0x10	▪ Supported commands:	0x03 0x06 0x10

Dato / data	Indirizzo / address	Descrizione / description	
Modo operativo / Operating mode	1601 (PLC: 41602)	0x00: Standby / standby 0x01: Solo ventilatore / fan only 0x02: Raffrescamento / cooling 0x03: Riscaldamento / heating 0x04: Deumidificatore / dry 0x05: Automatico / automatic	
Setpoint ambiente Ts / Room setpoint Ts	1602 (PLC: 41603)	Intervallo di valore ammessi: 17-30 °C Il setpoint non può essere impostato se la modalità operativa dell'unità è impostata su "Solo ventilatore" o "Deumidificatore". Allowed value range: 17-30 °C The setpoint cannot be set if the unit's operating mode is set to "Fan only" or "Dehumidifier".	
Velocità ventilatore / speed fan	1603 (PLC: 41604)	0x02 : Bassa velocità / Low speed 0x03 : Media velocità / Middle speed 0x04 : Alta velocità / High speed 0x05 : Velocità automatica / Auto speed	
Timer ON	1604 (PLC: 41605)	Valori ammessi / allowed values: 0÷96; 0=0h, 96=24h	
Timer OFF	1605 (PLC: 41606)		
Temperatura T1 / T1 temperature	1606 (PLC: 41607)	Valori ammessi / allowed values: 0÷240; 0=-20°C, 240=100°C Metodo di calcolo / calculation method: $T = (\text{temperatura reale/real temperature} + 5) * 2 + 30$	
Temperatura T2A / T2 temperature	1607 (PLC: 41608)		
Temperatura T2B / T2B temperature	1608 (PLC: 41609)		
Flag di blocco / Block flag	1612 (PLC: 41613)	Bit 0	Blocco remoto/remote lock: 1-ON; 0-OFF
		Bit 1	00: Blocco OFF / block OFF 01: Blocco in raffrescamento / cooling block 10: Blocco in riscaldamento / heating block
		Bit 2	
		Bit 3-15	Sempre/always = 0
Stato pompa / Pump status	1613 (PLC: 41614)	Bit 0	1-ON; 0-OFF
		Bit 1-15	Sempre/always = 0
Guasti / broken down	1614 (PLC: 41615)	Bit 0-1	Sempre/always = 0
		Bit 2	E2, guasto sonda/probe failure T1
		Bit 3	E3, guasto sonda/probe failure T2A

		Bit 4	E4, guasto sonda/probe failure T2B
		Bit 5-6	Sempre/always = 0
		Bit 7	E7, guasto/ failure EEPROM
		Bit 8	E8, guasto velocità ventilatore / fan speed fault
		Bit 9-13	Sempre/always = 0
		Bit 14	EE, guasto livello acqua
		Bit 15	Sempre/always = 0
Stato protezione / protection status	1615 (PLC: 41616)	Bit 0	Sempre/always = 0
		Bit 1	Protezione defrost / defrost protection
		Bit 2-15	Sempre/always = 0
Baud rate	1640 (PLC: 41641)	Valori ammessi / allowed values: 4800, 9600, 19200, 38400	
Parità / parity	1641 (PLC: 41642)	Valori ammessi / allowed values: 0-Dispari; 1-Pari; 2-Nessuna	
Stop bit	1602 (PLC: 41643)	Valori ammessi / allowed values: 0-Uno/one; 1-Due/two	



FERROLI S.p.A.
Via Ritonda 78/a
37047 San Bonifacio - Verona - ITALY
www.ferroli.com
Made in China - Fabbriato in Cina